



Z-FLEX[®]
CHIMNEY & VENTING SOLUTIONS



Chimney Lining Systems

Z-FLEX® Aluminum Liner Kits and Connectors

Aluminum Chimney Gas Liner Kits **GAS APPLICATIONS**

Z-FLEX® Aluminum Chimney Liner Kits come complete with everything needed to quickly and easily install a professional venting system.

Z-FLEX® liner is manufactured using a dead soft aluminum strip which is spirally wound and mechanically joined together forming an air-tight and leakproof Triple-Lock™ seam.

Z-FLEX®'s specially designed corrugations provide excellent flexibility while maintaining superior crush strength. The result is a clearly superior product offering incredible longevity.



Aluminum Liner Kit Includes:

2-Ply Aluminum Liner
Chimney Flashing
Rain Cap
Mortar Collar
3 Screws
Part No.: 2GACKIT
Dia.: ____ | Lgth.: ____
Dia.: 3", 4", 5", 6", 7", 8", 10"
Lengths: 15' - 50'

Gas Fireplace Kit Includes:

2-Ply Aluminum Liner
Chimney Flashing
Rain Cap
Fireplace Adapter (Single Appliance)
3 Screws
Part No.: 2GAFKXX
Dia.: ____ | Lgth.: ____
Dia.: 3", 4", 5", 6", 7", 8", 10"
Lengths: 15' - 50'



Z-FLEX® Chimney Liner Systems

Z-FLEX Insul-liner™

Pre-Insulated Chimney Liner for Category 1 Gas Heating Equipment & Gas Fireplaces

- **Insul-Liner™** is another “simple solution” from Z-FLEX®. The National Fuel Gas Code (NFPA 54, ANSI Z223.1) recommends that liners be insulated in certain situations.
- A good rule of thumb is to use an insulated liner in exterior chimneys or when a brick chimney has no clay liner at all. The insulation will keep the flue gases warm to prevent condensation. Also refer to the equipment manufacturer’s instructions for their recommendations.
- **Insul-Liner™** replaces B-Vent when relining a masonry chimney.
- **Insul-Liner™** is insulated at the factory and protected with an outer aluminum jacket. This eliminates the time needed to insulate on the job site and prevents damage to the insulation during installation. Simply remove from the box and install.

Insul-liner™ Kit Includes:

Insulated Aluminum Liner
Chimney Flashing
Rain Cap
Mortar Collar
3 Screws
Part No.: 2GIAKXX
Dia.: ____ | Lgth.: ____
Dia.: 3", 4", 5", 6", 7", 8"
Lengths: 15'



Insul-liner™ Gas Fireplace Kit Includes:

Insulated Aluminum Liner
Chimney Flashing
Rain Cap
Fireplace Connector
3 Screws
Part No.: 2GIAFKX
Dia.: ____ | Lgth.: ____
Dia.: 4", 5", 6" Lengths: 15'



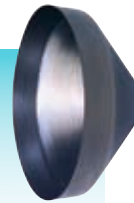
Fireplace Connector

Gas Fireplace Kits only.
Part No.: 2ZSCPRP
Dia.: ____



Nose Cone

Part No.: 2NCXXXX
Dia.: ____
Dia.: 3", 4", 5", 6", 7", 8", 10"



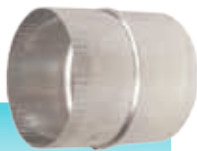
Galvanized Y

Part No.: 2GAYXXX
Dia.: ____ | Lgth.: ____
Dia.: 3", 4", 5", 6", 7", 8"
Connects two vent connectors to common vent.



Liner Coupling

Part No.: 2CNNTRG
Dia.: ____
Dia.: 3", 4", 5", 6", 7", 8", 10"
Custom sizes available. Used to attach two lengths of vent.



Universal B-Vent Connector

Part No.: 2CNNBFC
Dia.: ____
Dia.: 3", 4", 5", 6", 7", 8", 10"
Connects any B-Vent to Z-FLEX® liner.



Additional Length Aluminum 2-Ply Liner

Part No.: 2GAXXXX
Dia.: ____ | Lgth.: ____
Available in multiples of 5' to 50'.



Z-FLEX[®] Features and Benefits

Z-Flex[®] Triple-Lock[™] - Manufactured from 316TI, titanium stabilized, nickel, chromium, molybdenum stainless steel. Excellent resistance to the corrosive effects of flue gases. Suitable for extended periods at elevated temperatures without compromising corrosion resistance. A superior 29-4C grade stainless steel option is also available for conditions requiring greater resistance to acidic attack.

Construction - Triple-Lock[™] Joint System; acknowledged to be the best available for strength and longevity. Stainless steel strip is spirally wound and mechanically joined together forming an air tight and leakproof **Triple-Lock[™]** seam. The corrugated outer wall provides crush protection during installation. The thin walled corrugated construction conducts heat quickly, aiding draft and discouraging the buildup of soot and other potentially corrosive residue.

Dimensions - Available in a range of sizes suiting all applications, from 2" to 24" diameter. Supplied in standard lengths up to 50 ft.

Smoothcore Construction - Twin Strip (2 ply) construction. The corrugated outer wall provides crush resistance during installation. The inner wall is smooth, permitting the smooth flow of flue gasses and impeding the build up of soot and other potentially corrosive residue. The inner and outer walls are joined by a **Triple-Lock[™] Joint System**; acknowledged to be the best available for strength and longevity.

Approval - Z-Flex[®] Triple-Lock[™] Chimney Liner Systems are listed and labelled by Underwriters Laboratories to UL1777 and ULC S635, Chimney Lining Systems for existing Masonry and Factory Built Chimneys.

Warranty - Lifetime Limited Warranty.



- Patented Triple-Lock[™] design for strength
- Right sized packaging to lower shipping costs
- Best available materials/alloys
- 40+ years of manufacturing experience
- "Immediate" availability (24-72 hour lead time)
- Listed by Underwriters Laboratories

Z-FLEX® Chimney Liner Systems

Z-FLEX® Stainless Steel Chimney Kits Everything you need to get the job done right

Triple-Lock® Stainless Steel ALL FUEL APPLICATIONS

- **Z-FLEX®** Stainless Steel Chimney Liner Kits come complete with everything you need to quickly and easily install a professional venting system.
- **Patented Airtight Triple-Lock™ Construction**
Ideal for use with gas, oil, pellets and wood. (For use with coal, see warranty). The patented Triple-Lock™ construction is tested and listed by U.L. Triple-Lock™ is accepted by industry as the strongest joint system available.
- Manufactured from special high temperature and acid 316Ti resistant stainless.
- **Z-FLEX®**'s specially designed corrugations provide excellent flexibility while maintaining superior crush strength. The result is a clearly superior product offering incredible longevity.



Oil & Gas Kit Includes:

Stainless Steel Liner
Chimney Flashing
Rain Cap
Mortar Collar
Part No.: 2OILKTX
Dia.: ____ | Lgth.: ____
Dia.: 3"-24" | Lengths: 50'



All Fuel Kit Includes:

Stainless Steel Liner
Chimney Flashing
Rain Cap
Z-Lok Tee
Part No.: 2ZFLKIT
Dia.: ____ | Lgth.: ____
Dia.: 3"-24" | Lengths: 50'



Pellet Kit Includes:

Stainless Steel Liner
Chimney Flashing
Rain Cap
Pellet Tee
Part No.: 2OILKTX
Dia.: ____ | Lgth.: ____
Dia.: 3"-24" | Lengths: 50'



All Fuel Insert Kit Includes:

Stainless Steel Liner
Chimney Flashing
Rain Cap
Insert Connector
Part No.: 2OILKTX_I
Dia.: ____ | Lgth.: ____
Dia.: 3"-24" | Lengths: 50'



Smoothcore Kit Includes

Smoothcore Stainless Steel Liner
Chimney Flashing
Rain Cap
Z-Lok Tee
Part No.: 2ZFCKIT
Dia.: ____ | Lgth.: ____
Dia.: 3"-8" | Lengths: 50'



Universal All Fuel Insert Kit Includes:

Stainless Steel Liner
Chimney Flashing
Rain Cap
Dripless Connector
Rigid Stacking Tee
Part No.: 2ZFLKTO
Dia.: ____ | Lgth.: ____
Dia.: 3"-24" | Lengths: 50'



Triple-Lock® Stainless Steel Liner & Accessories ALL FUEL APPLICATIONS

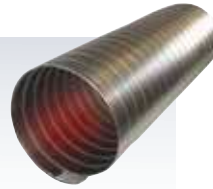
Stainless Steel Flex Liner

Part No.: 2ZLSSXX
Dia.: _____ |
Lgth.: _____
Part No.: 2ZL294C
Dia.: _____ | Lgth.: _____
Dia.: 2" - 24"
Lengths: Up to 50' or multiples of 5'.



Smoothcore Flex Liner

Part No.: 2ZLSCXX
Dia.: _____ | Lgth.: _____
Dia.: 3" - 8"
Lengths: 5' to 20 ft.



Heavy Wall Flex Liner

Part No.: 2ZLSSXX
Dia.: _____ |
Lgth.: _____
Lengths: Up to 50' or multiples of 5'.



Lock N'Go Tee

Part No.: 2ZFTCB
Dia.: _____
Dia.: 3" - 24"
Flex Ready Rigid Tee also available.



Z-Lok Tee

Part No.: 2ZFTJ
Dia.: _____
Dia.: 3" - 24"
Flex ready tool-less connection



4" Flex Ready Pellet Tee with 3" Branch

Part No.: 2ZPT43
Connects Z-Flex to solid fuel inserts where space is minimal



Rigid Stacking Tee

Part No.: 2ZRBTX
Tees have removable clean-out caps and removable long nose spout.
Dia.: 3"-24".
NOTE: 3" and 10"-24" nose spouts are not removable.



Insert Connector

Part No.: 2CNNI
Dia.: _____
Dia.: 3" - 10"
Used to connect flexible liner to insert



Dripless Type "A" Connector

Part No.: 2CNNTRC
Dia.: _____
Dia.: 3" - 24"
Used to mate Z-FLEX® Liner to stove-pipe or when going through a fireplace insert.



Fresh Air Kit for Pellet Stoves

Kit includes:
1 2" x 5' Aluminum 1 ply duct
1 2" intake hood w/screen
2 2" gear clamps
Part No.: 2FAK _ _ _ _



Z-Max Deluxe Rain Cap & Flashing

Part No.: 2ZMRCS
Dia.: _____
Dia.: 3" - 10"
The Z-Max rain cap prevents deterioration caused by moisture entering the chimney. (Storm collar included)



Z-FLEX® Chimney Liner Systems

Stainless Steel Oil + Solid Fuel Liner Kits ALL FUEL APPLICATIONS

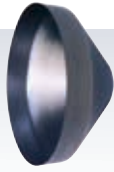
Nose Cone

Part No.: 2NCXXX

Dia.: _____

Dia.: 3" - 24"

To attach to liner, attach rope to cone and pull rope down chimney.



Insulating Blanket w/ Wrap & Gear Clamps

Part No.: 2INSKIT

Dia.: _____

Sold in 5, 10, 25 ft kits.

1, 2, 3, 4 ft lengths

Includes 2 gear clamps per 5' section.



Stainless Steel Rigid Liner

Part No.: 2ZR321F

Dia.: _____ Lgth.: _____

Dia.: 3" - 24"

Fusions welded seams.

Close tolerance fit



Offset Adaptor 30°

Part No.: 2ZOA30

Dia.: _____

Dia.: 3" - 10"



Offset Adaptor 45°

Part No.: 2ZOA45

Dia.: _____

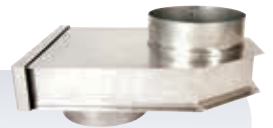
Dia.: 3" - 10"



Stainless Steel Offset Box

Part No.: 2ZFOFFSET

Used to connect liner to insert



Rain Cap

Part No.: 2RNCAPS

Dia.: _____

Dia.: 3" - 24"

For use with flexible or rigid liner



90° Elbow

Part No.: 2RE90XX

Dia.: _____

Dia.: 3" - 24"



45° Elbow

Part No.: 2RE45XX

Dia.: _____ | Lgth.: _____

Dia.: 3" - 24"



Reducer/Incraser

Reducer Part No:

2RD___R___X___

Incraser Part No.

2IN___R___X___

Note flow direction



Stainless Steel Chimney Flashing Starter Collar 16" x 16" Base

Part No.: 2ZSCSXX

Dia.: _____

Dia.: 3" - 24"

Used to cover chimney top opening



Top Support

Part No.: 2ZTSXXX

Dia.: _____

Dia.: 3" - 24"

For use with flex liner and flashing



Stainless Steel Self-Drilling Screws

Part No.: 2SSSCREW



Oval Liner System All Fuel Applications

Stainless Steel Oval Kit

Kit includes:

- 1 25 ft Oval Section
- Oval Raincap
- Oval Flashing
- Oval Dripless Connector
- Oval Base Tee

Part No.: 2OVKIT __ 25

5 ft and 10 ft oval sections available. Dripless connector required to join oval sections.



Z-Flex Stainless Steel Liner Oval Dimensions (Approximate)

Round Size	Oval Size O.D.
5"	4 1/4" x 7 3/4"
6"	4 1/2" x 8 3/8"
7"	4 3/4" x 9 1/2"
8"	5" x 11"

Flexible S/S Oval To Round

Part No.: 2ZLSSOR

Dia.: ____ | Lgth.: ____

Dia.: 6", 7", 8", 10"

5 ft to 10 ft available. Oval accessories available



Stainless Steel Dripless Type "A" Oval Connector

Part No.: 2CNNTRA

OV: ____ | Dia.: ____

Dia.: 6", 7", 8", 10"

Used to join Z-FLEX® Oval Liner to Oval T-Section and Oval to Oval Liner or when going through a fireplace adapter.



Stainless Steel Single Oval Base/ Tee

Part No.: 2ZRBTOX

Dia.: 6", 7", 8", 10"

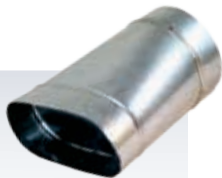


Oval To Round Adapter

Part No.: 2ZRORAX

Dia.: ____

Dia.: 6", 7", 8", 10"



Round to Oval Adapter

Part No.: 2ZRROAX

Dia.: ____

Dia.: 6", 7", 8", 10"



Flexible S/S Full Oval

Part No.: 2ZLSSOX

Dia.: ____ | Lgth.: ____

Dia.: 6", 7", 8", 10"

Note: Oval accessories available.



Oval Raincap with Spark Arrestor

Part No.: (2ZMRCOV_ _)

Dia.: ____

Dia.: 6", 7", 8", 10"

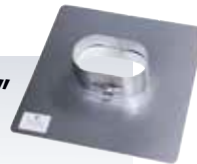


Flat Flashing Oval 6"

Part No.: (2ZSCO1806)
18 X 18

Dia.: ____

Dia.: 6", 7", 8", 10"



Z-FLEX® Chimney Liner Systems

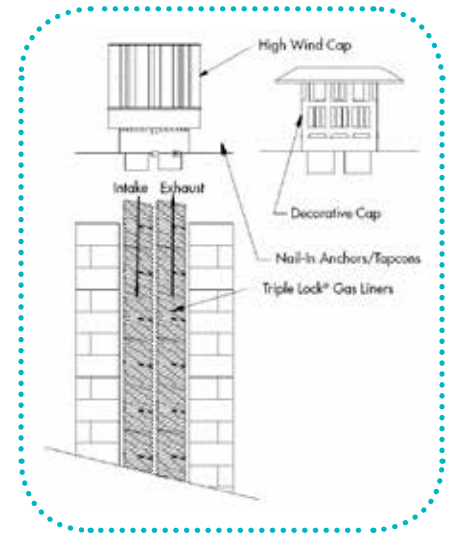
DIRECT VENT System

A Completely Sealed System that does not Compromise Indoor Air Quality
Designed for use when converting existing wood-burning fireplaces into gas fireplaces

In terms of safety, efficiency and versatility, Direct Vent fireplaces have several advantages over traditional fireplaces.

Using indoor air for combustion can de-pressurize the living space and potentially pull harmful flue gases back into the home. Direct Vent Systems use outdoor air instead of indoor air for combustion.

Outside air is drawn in for combustion while flue gas is exhausted outside. The natural flow of heat creates a convection loop; as hot air exits the pipe, cooler, denser air is pulled back to the burner.



Direct Vent Insert Kits include: Two Triple-Lock® Gas Liners for flue exhaust and outside combustion air, and either an extreme weather or decorative co-linear termination.

Decorative Kit



Direct Vent Co-Linear Flexible Liner Kit with Decorative Cap/Flashing

- Chimney Liners (Exhaust and Intake)
- Decorative Cap/Flashing
- High Temperature RTV Sealant
- Self-Tapping Screws



Extreme Weather Kit



Direct Vent Co-Linear Flexible Liner Kit with Extreme Weather Cap/Flashing

- Chimney Liners (Exhaust and Intake)
- Extreme Weather Cap/Flashing
- High Temperature RTV Sealant
- Self-Tapping Screws



DIRECT VENT System

Safety - Direct Vent Systems exhaust all products of combustion outside maintaining higher indoor air quality. When fuel burns, releasing poisonous carbon monoxide becoming dangerous when exposed to it for too long and in high concentrations. Direct Vent flue Systems are completely sealed from the interior of the building, therefore no harmful flue gases are released into the living space.

Efficiency - Direct Vent Fireplace Systems burn natural gas or propane, unlike tradition fireplaces, converting most of the fuel to usable heat. They are completely sealed off from the interior rooms by a glass door, which prevents significant heat loss.

Quality - Z-Flex Triple-Lock[®], regarded as the strongest flexible duct construction method in the industry; provides piece of mind that flue gases are being safely vented outside the living space through continuous length flexible gas vent. In addition, computer added design and construction methods help produce aesthetically pleasing and efficient system components.

Versatility - Direct Vent Systems are easy to install. Continuous length Triple-Lock[®] Flexible Gas Vent provides only two connection points; Insert and Termination. The Flexible Venting is quickly and easily routed through straight or offset existing masonry chimneys. Extreme Weather and Decorative Terminations are available for any installation.

Z-Flex Direct Vent Systems

Part ID	Description	Exhaust size	Intake size
2DVI335D	DV Co-Linear 3/3 Decorative Kit X 35 Ft	3 in.	3 in.
2DVI335X	DV Co-Linear 3/3 Extreme Weather Kit X 35 Ft	3 in.	3 in.
2DVI435D	DV Co-Linear 4/3 Decorative Kit X 35 Ft	4 in.	3 in.
2DVI435X	DV Co-Linear 4/3 Extreme Weather Kit X 35 Ft	4 in.	3 in.



Z-FLEX® Chimney Liner Systems

Liner Finders



Apply the right liner every time with Line Finder from **Z-FLEX®**.

Gas and Oil Liner Finders make it fast and easy to match the right **Z-FLEX®** product and size to the liner application. The convenient "slide rule" design is simple to use, portable, and foolproof.

When to Z-FLEX® a Chimney

- When a masonry chimney has no liner at all
- When damage to existing chimney lining is evident
- When retrofit appliance has fan-assisted combustion and is vented alone
- When additional or replacement equipment is installed or an appliance is converted to gas from another fuel
- When the existing chimney is oversized relative to heating requirement

Safety Issues

Since the federal government required modern heating equipment to achieve higher efficiencies in 1992, safely venting them has become more of a challenge. Today's more efficient equipment produces lower flue gas temperatures than pre-1992 equipment. The low temperature flue gas provides little natural draft in chimneys and is more likely to condense into an acidic, and corrosive, solution. The result can cause property damage, personal injury, or death. The natural laws of physics that control this phenomenon pertain to all gas and oil fired equipment.

Our three major product lines; chimney liners, special gas vent (AL29-4C®* stainless steel), and flexible vent connectors are all designed to prevent flue gas condensation or protect against its corrosive effects. Most of the products **Z-FLEX®** has developed are now recommended or required by the following national codes and testing agencies:

1992 National Fuel Gas Code

Venting Tables for sizing Chimney Liners and Vent Connectors when adding or replacing equipment. Insulated Connectors required in attics and other "cold" spaces.

1997 NFPA 31

"Installation of Oil Burning Equipment"
Venting Tables for sizing Chimney Liners.

International Approval Services (Formerly AGA)

June, 1996 – IAS requires all Category III gas boilers and furnaces to use a UL 1738 approved vent system (like our **Z-VENT®**). July, 1998 – IAS requires all Category III gas residential unit heaters to use a UL 1738 approved vent system (like our **Z-VENT®**).

Z-FLEX®

The Flexible Venting Solutions Specialist

Z-FLEX®, part of the Novaflex Group of companies, is the leading manufacturer of specialty venting systems for furnaces, boilers, water heaters, oil heaters, fireplaces, and more.

Z-FLEX® has been providing flexible answers to gas oil, pellet and wood venting applications since 1979. We have pioneered flexible chimney liner solutions and special gas vent (AL 29-4C®).* A variety of innovations in materials and construction have led to products that deliver:

- Superior performance and increased efficiency
- Easier handling and faster, simpler installation
- Greater reliability, safety and increased service life

To that, we add responsive customer service and expert technical support.

The NovaFlex Group® is a privately held company committed to continuous advancement in venting, HVAC, hose and connector solutions. NovaFlex® has one of the broadest product ranges available in the hose and ducting marketplace as well as in the HVAC, Industrial Venting and Hose Industries and in Commercial Exhaust Venting Systems.

*AL 29-4C® is a registered trademark of Allegheny Ludlum Corp.



U.S.A.
20 Commerce Park North
Bedford, New Hampshire 03110-6911
tel: 603.669.5136 fax: 603.669.0309

CANADA
452 Attwell Drive
Etobicoke, ON M9W 5C3
tel: 416.679.0045 fax: 416.679.0051